

Wednesday
July 24, 2024
2PM

Special Education Advisory Council

Presented by:
Latori Williams-Blair, M.Ed M.A.



Introduction



What is SEAC?

The SEAC is comprised of FANNIE C. WILLIAMS CHARTER SCHOOL personnel, city educators, students, and parents collaborating to ensure opportunities for a successful educational experience of all students, including those involved in our special education program.

The Goal of SEAC?

The goal of the SEAC is to provide a safe space to discourse regarding concerns students face related to academic, developmental, social, emotional, and/or physical challenges.



SPECIAL EDUCATION
ADVISORY COUNCIL



WHO REPRESENT THE SEAC?



Special Education Advisory Council



Member 1 - Juanita Moliere, Parent

Member 2 - Erica Holmes, Parent

Member 3 - Tamiara Weber, Parent

Member 4 - NyHi - High School Student

Member 5 - Demetria Hines, Parent

Member 6 - Dr. Kemisha Ware, Exceptional Student Services Director at Warren Easton Charter

Member 7 - Kristen Eschman, Speech Pathologist at Fannie C. Williams Charter

Member 8 - Sonya Dent, Self-Contained/Resource Teacher at Fannie C. Williams Charter

Member 9 - Latori Williams-Blair, Director of Student Support Services at Fannie C. Williams Charter
Chairperson of FWCS Special Education Advisory Council



SPECIAL EDUCATION
ADVISORY COUNCIL



HOW WERE MEMBERS SELECTED?

Louisiana State Legislature

Title 17 - Education 17:1944.1. Local Special Education Advisory Councils; Creation; Purpose

- provide advice and feedback regarding special education policies, procedures, and resources
- engage in outreach activities to the community
- at least fifty percent of the membership shall be parents or legal guardians of students with an exceptionality, (other than gifted and talented)

<https://legis.la.gov/Legis/Law.aspx?d=1148773>
<https://fhfofgno.org/resources/laws-and-bulletins>



Louisiana State Legislature

Title 17 - Education 17:1944.1. Local Special Education Advisory Councils; Creation; Purpose

- students must be enrolled in a school under the jurisdiction of or who are receiving special education services from the public school governing authority, none of whom shall be employees of the public school governing authority
- one high school student with an exceptionality, (other than gifted and talented)
- one person who represents an entity that serves students with disabilities or families of students with disabilities and who is not an employee of the school governing authority



<https://legis.la.gov/Legis/Law.aspx?d=1148773>

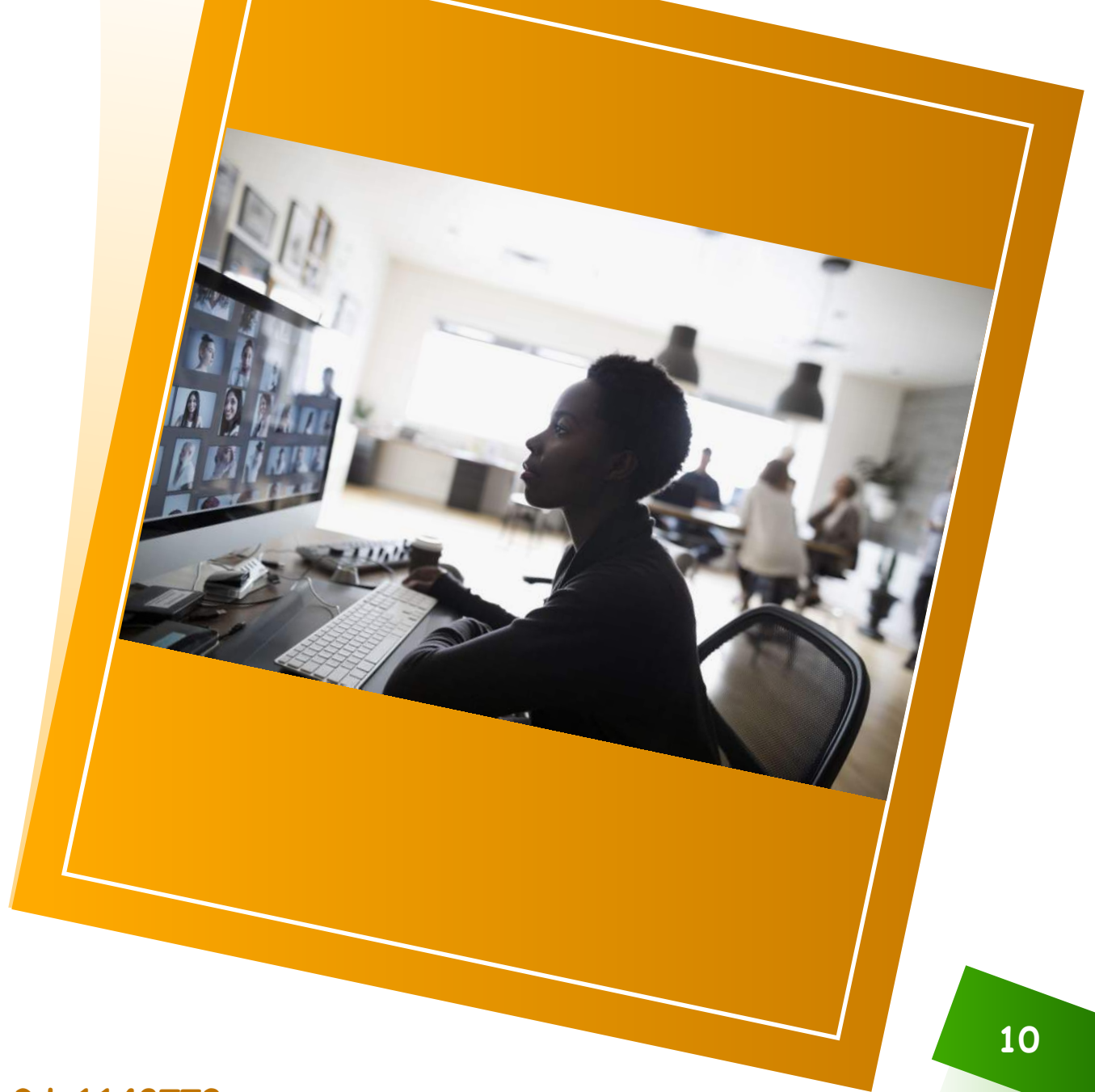
Louisiana State Legislature

Title 17 - Education
17:1944.1. Local Special Education Advisory
Councils; Creation; Purpose

At least 10% of the Membership

- at least one member shall be a teacher, principal, or paraprofessional who serves students with disabilities and who works in a school under the jurisdiction of the public school governing authority
- A chairperson of the council that will call the council's meetings, preside over the meetings, and establish the agendas for the meetings

<https://legis.la.gov/Legis/Law.aspx?d=1148773>



Who is Eligible for Special Education?



IDEA's definition of a "child with a disability" lists 13 different disability categories under which a child may be found eligible for special education and related services.



Disability Categories



Emotional
Disturbance

Autism

Intellectual
Disabilities

Developmental
Delay

Deaf Blindness

Multiple
Disabilities

Hearing
Impaired



Disability Categories



Orthopedic
Impairment

Specific Learning
Disability

Traumatic Brain
Injury



Other Health
Impairment

Speech or
Language
Impairment

Visual Impairment
including
Blindness

Child Find Process

School Building Level Committee

RTI

SECTION 504



Child Find Process

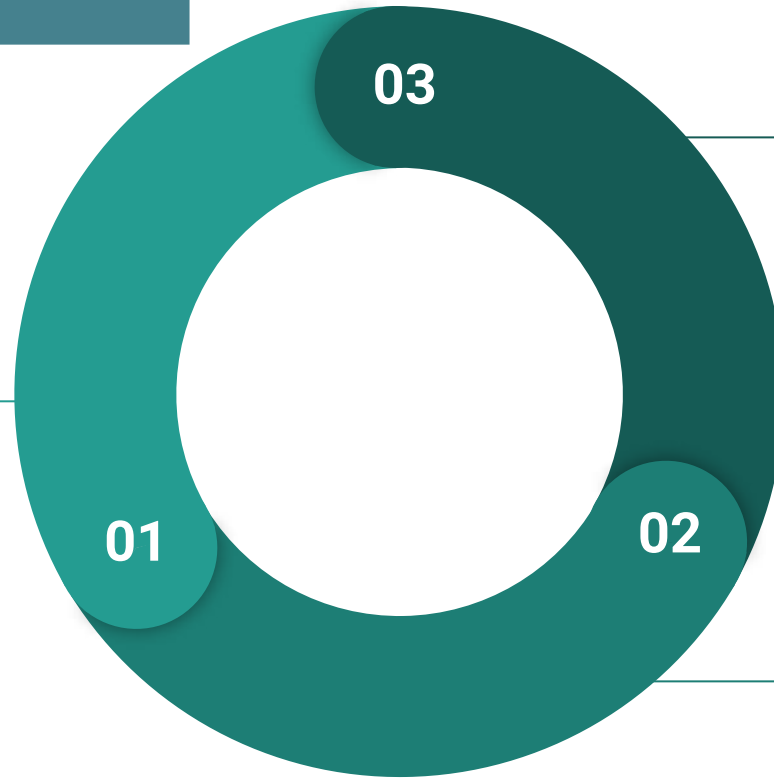
School Building Level Committee

SPECIAL EDUCATION



INTERVENTION PROCESS

DIAGNOSE



TEACH

GROUP




Models of Support



Consultation (External Support)

External support is face to face conversation between the general education teacher and the special education teacher.



Students may have
**ACCOMMODATIONS
ONLY.**

Inclusion (In Class Support)

Inclusion is a direct service provided to students with disabilities in the general education classroom.

Resource (Pull Out Support)

Resource is a direct service provided to students with disabilities in a special education classroom.




Models of Support



Self Contained

Self Contained is a direct service in which students are taught multiple subjects by one educator in a small group setting.



Homebound

Homebound is a direct service provided to students with disabilities as a result of health care treatment, physical illness, and/or accident, that prevents a student from attending school.



Related Services

Speech/Language

Adapted Physical
Education

Social Worker



Occupational
Therapy

Physical Therapy

School Health
Services

Helpful Resources

[Louisiana Believes](#)

[Rights and Responsibilities](#)

[Special Education Laws and Bulletins](#)

[Louisiana DeafBlind Project for Children and Youth](#)

[Youth Force NOLA](#)

[NOLA Special Needs Registry](#)

EVENTS

The National WORLD WAR II Museum

Sensory Friendly Mornings

This program is for individuals of all ages with special needs and their families to enjoy early access to the Museum with modifications to make the experience more sensory friendly.

Thursdays 8 - 12PM

Special Olympics Events

<https://specialolympicsla.org/>

Application

<https://forms.gle/QxFZnxvBrjH3JSRr7>





Thank You!

Latori Williams-Blair